



www.superradiatorcoils.com

**STEAM and WATER**

**Coil Specifications Data Sheet**

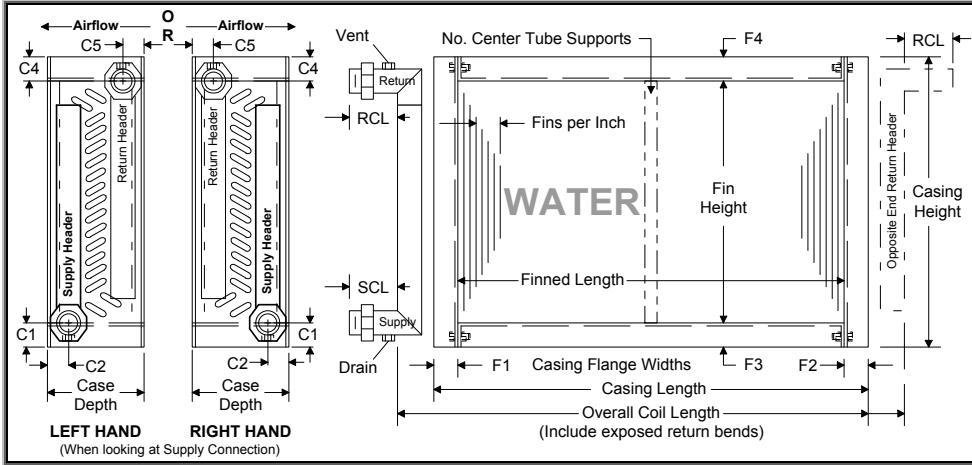
TO:

**WEST COAST**  
 azinfo@superradiatorcoils.com  
 FAX: 602-257-9175

**CENTRAL**  
 mninfo@superradiatorcoils.com  
 FAX: 952-556-3331

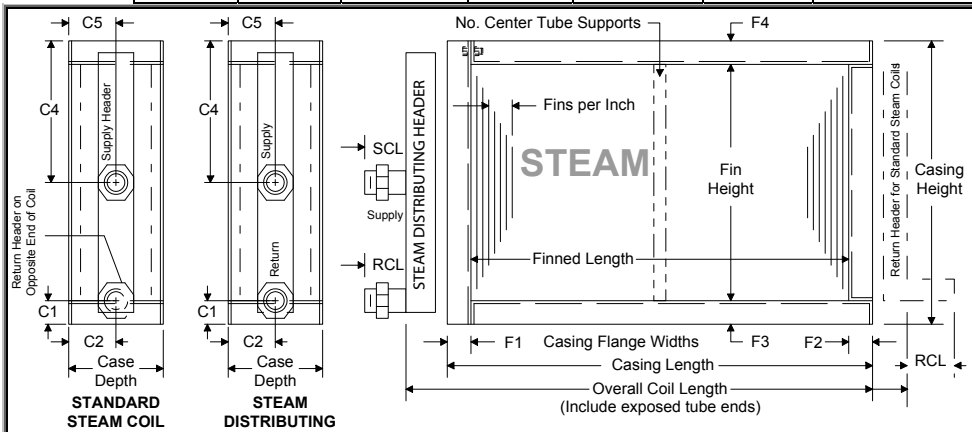
**EAST COAST**  
 vainfo@superradiatorcoils.com  
 FAX: 804-379-2118

CUSTOMER:		DATE:	PAGE#	of
JOB REF.:	TYPE COIL:	MODEL#:	QTY:	



NOTES:

Finned Area	Fin			Fins per Inch	Fin			Tube		
	Height	Length	Depth/Rows		Thickness	Material	Enhancement	O.D.	Wall	Material
Coil Casing	Case			F1	F2	F3	F4	Casing		
	Height	Length	Depth					Material	Thickness	Style
Coil Connection	C1	C2	C4	C5	Supply			Return		
					SCL Connection Length	Size	Type Connect	RCL Connection Length	Size	Type Connect
Coil General	Supply Hdr. Size	Return Hdr. Size	Header Material	Overall Coil Length	# Center Supports	Opposite End Hdr.	Airflow-H/V & Hand-L/R	# Coil Circuits	Tube Face X Row Centers	Tube Face/ Rows Deep



NOTES:

**STD – Standard Steam Coil** – Used for applications where entering air is above 32°F and/or low pressure steam (<10 PSI) is not normally modulated. Condensate return is on the opposite end of the coil. For more information, see SRC Bulletin T001.

**SD – Steam Distributing Coil** (a.k.a. Non-Freeze) An inner tube; minimizes condensate freeze up, provides even air temperature on long coil lengths when steam is modulated, and/or supply and return connections must be on the same end of coil. See SRC Bulletin T002.

**Return Bend Steam Coil** – Not recommended for steam applications (see SRC Bulletin T001). If STD or SD type coils cannot be applied, use the above water coil for designing, and note "For Steam Application". SRC does not warrant this style of coil against damage due to water hammer and/or lowered thermal performance from condensate build-up.