

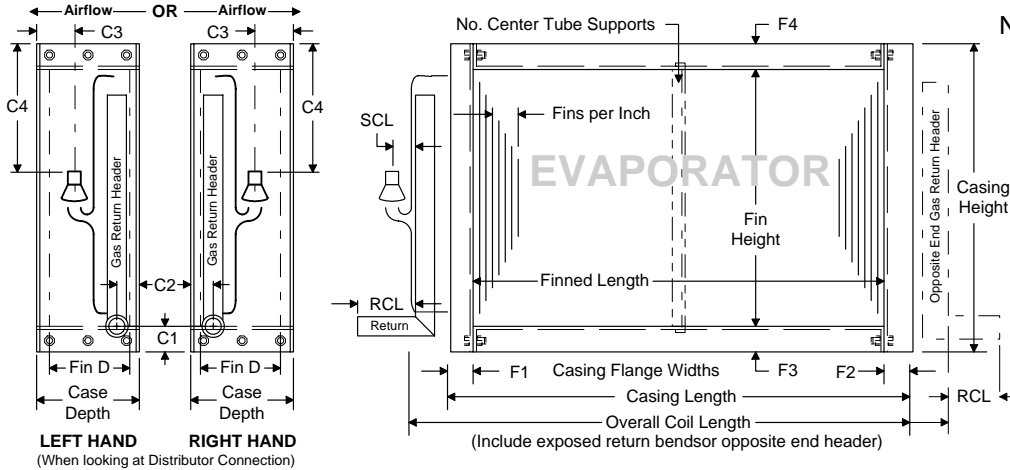
REQUEST FOR QUOTE
SPECIFICATION DATA FOR EVAPORATOR COILS

FROM: _____ COMPANY: _____ DATE: _____

FAX: _____ PHONE: _____ EMAIL: _____ PAGE(S): _____

FAX TO: **Phoenix, AZ** (Western USA) **Chaska, MN** (Central USA) **Richmond, VA** (Eastern USA)
FAX: 602-257-0472 **FAX: 952-556-3331** **FAX: 804-379-2118**
TEL: 800-899-2645 **TEL: 800-394-2645** **TEL: 800-229-2645**

Coil MFR _____ Coil Model _____ Qty _____



NOTES:

NOTE: If a replacement coil, providing the same distributor model is imperative for proper coil operation. Lead tube OD is in 1/16" increments.

Finned Area	Finned Area				Fin			Tube				
	Height*	Length*	Depth*	Fins / Inch*	Thickness*	Material*	Surface Type*	O.D.*	Wall	Material*	Rows *	Tubes High*
Coil Casing	Case			F1	F2 (See 2. Below)	F3	F4	Casing				
	Height	Length	Depth					Material	Thickness	Style		
Coil Distrib. & Connect.	Circuits	Distributor Supply (See important note below)						Hot Gas Return <input type="checkbox"/> On Opposite End of Coil				
	# Coil Circuits*	Qty/Coil*	Distributor Model	Internal Nozzle# *	Size Opt. Sideport	Distributor Lead Tubes No. Of*	O.D.*	Length *	Return Hdr. Size*	Header Material	Connection Length (RCL)	Connection Size
Need circuits, distributor and lead tube data to ensure identical replacement coil performance. Lead tube OD in 1/16" sizes.												
Coil General	C1	C2	C3	C4	Overall Coil Length	Airflow* & Coil Hand* If Horizontal AF If Vertical AF		# Center Supports	Tube Face x Row Center Distances*		Staggered or Inline Pattern	
						<input type="checkbox"/> RH or <input type="checkbox"/> LH	<input type="checkbox"/> Up or <input type="checkbox"/> Down					
If the refrigerant exceed 175 PSIG and/or the coil requires UL/CSA please note: _____												

Performance (See 1. Below)	Air (Fin Side)				Heat Load	Refrigerant (Tube Side)			Pressure Drop	
	Require Entering wet bulb or % RH if Condensing Moisture					BTU/Hr. or <input type="checkbox"/> kW	Liquid Temp °F	Suction Temp °F	Type Refrig.	Air Friction "wg
	Entering °F dry bulb	Entering °F wb or % RH	Leaving °F dry bulb	Leaving °F wet bulb	SCFM or <input type="checkbox"/> lbs./hr.					
Above performance is per coil or is the total for _____ coils. Unit has No. coils high _____ x wide _____ x deep _____										

1. To ensure proper replacement coil operation if performance data is not available, the data marked with an * are required.
2. Reducing the size of F2 may expose tube return bends to damage during installation and will NOT reduce the overall coil length.
3. If the coil is complex, has multi-stage circuits, or requires special coil dimensions and/or features not shown here please use our coil worksheet to fully describe the desired coil and its circuiting.