



www.superradiatorcoils.com

**REQUEST FOR QUOTE**  
**SPECIFICATION FOR CONDENSER / HEAT RECLAIM COIL**

FROM: \_\_\_\_\_ COMPANY: \_\_\_\_\_ DATE: \_\_\_\_\_

FAX: \_\_\_\_\_ PHONE: \_\_\_\_\_ EMAIL: \_\_\_\_\_ PAGE(S): \_\_\_\_\_

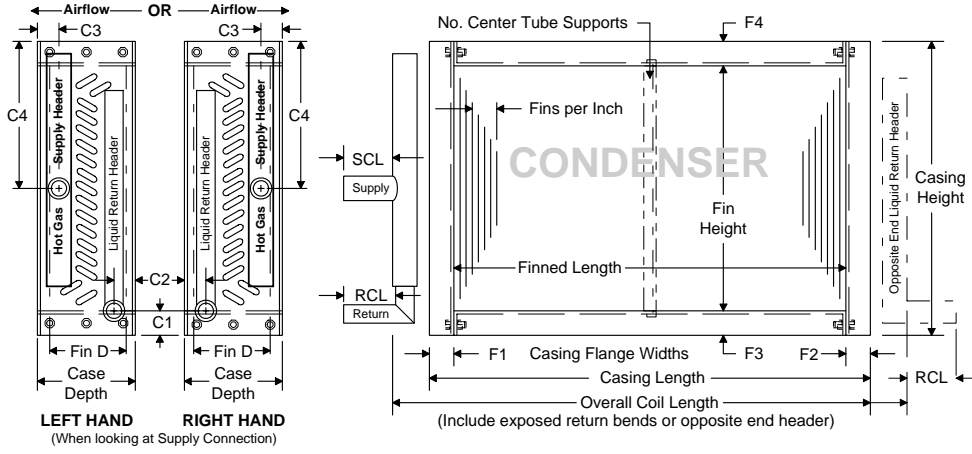
**FAX TO:**

**Phoenix, AZ** (Western USA)  
**FAX: 602-257-0472**  
**TEL: 800-899-2645**

**Chaska, MN** (Central USA)  
**FAX: 952-556-3331**  
**TEL: 800-394-2645**

**Richmond, VA** (Eastern USA)  
**FAX: 804-379-2118**  
**TEL: 800-229-2645**

Coil MFR \_\_\_\_\_ Coil Model \_\_\_\_\_ Qty \_\_\_\_\_



**NOTES:**

**NOTE:** Some condenser coils have sub-cooling circuits. Must count tubes connected to supply AND to return headers. List if different.

Finned Area	Finned Area				Fin			Tube				
	Height*	Length*	Depth*	Fins / Inch*	Thickness*	Material*	Surface Type*	O.D.*	Wall	Material*	Rows*	Tubes High*
Coil Casing	Case			F1	F2	F3	F4	Casing				
	Height	Length	Depth					Material	Thickness	Style		
Coil Header & Connect.	Circuits	Hot Gas Supply					Liquid Return <input type="checkbox"/> On Opposite End of Coil					
	# Coil Circuits*	Supply Hrd. Size*	Header Material	Connection Length (SCL)	Connection Size	Type Connection	Return Hdr. Size*	Header Material	Connection Length (RCL)	Connection Size	Type Connection	
Coil General	C1	C2	C3	C4	Overall Coil Length	Airflow* & Coil Hand*		#Center Supports	Tube Face x Row Center Distances		Staggered or Inline Pattern	
						<input type="checkbox"/> RH or <input type="checkbox"/> LH	<input type="checkbox"/> Up or <input type="checkbox"/> Down					
If the refrigerant exceed 375 PSIG and/or the coil requires UL/CSA please note: _____												

Performance (See 1. Below)	Air (Fin Side)		Heat Load		Refrigerant (Tube Side)			Pressure Drop	
	Entering Air °F	SCFM or <input type="checkbox"/> lbs./hr.	BTU/Hr. Heat Reject. Req'd	If Heat Reclaim BTU's Req'd	Condensing Temp °F	Suction Temp °F	Type Refrigerant	Air Friction *wg	Refrigerant PD PSIG
Above performance is per coil or is the total for _____ coils. Unit has No. coils high _____ x wide _____ x deep _____									

- To ensure proper replacement coil operation if performance data is not available, the data marked with an \* are required.
- Reducing the size of F2 may expose tube return bends to damage during installation and will NOT reduce the overall coil length.
- If the coil is complex, has multi-stage circuits, or requires special coil dimensions and/or features not shown here please use our coil worksheet to fully describe the desired coil and its circuiting.